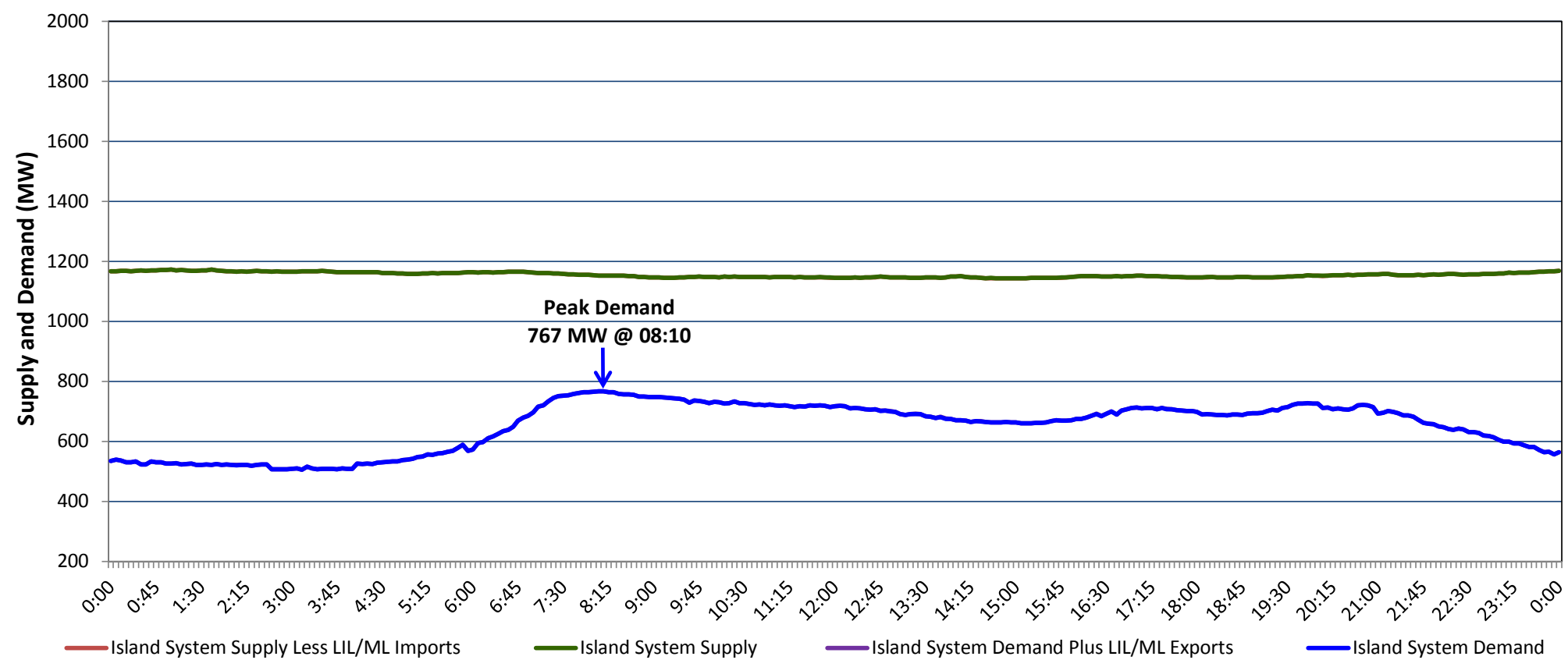


**Newfoundland Labrador Hydro (NLH)  
Supply and Demand Status Report Filed Thursday, September 17, 2020**

**Section 1  
Island Interconnected System Supply, Demand & Exports  
Actual 24 Hour System Performance For Wednesday, September 16, 2020**



**Supply Notes For September 16, 2020**

- 1,2
- A As of 0853 hours, June 21, 2020, Holyrood Unit 3 available but not operating (150 MW).
  - B As of 0808 hours, July 15, 2020, Holyrood Unit 2 unavailable due to planned outage (170 MW).
  - C As of 1811 hours, September 02, 2020, Holyrood Unit 1 available but not operating (170 MW).
  - D As of 1215 hours, September 13, 2020, Holyrood Gas Turbine unavailable due to planned outage (123.5 MW).
  - E As of 1748 hours, September 13, 2020, Bay d'Espoir Unit 7 unavailable due to planned outage (154.4 MW).
  - F As of 1854 hours, September 14, 2020, Bay d'Espoir Unit 5 unavailable due to planned outage (76.5 MW).

**Section 2  
Island Interconnected Supply and Demand**

Thu, Sep 17, 2020	Island System Outlook <sup>3</sup>	Seven-Day Forecast	Temperature (°C)		Island System Daily Peak Demand (MW)	
			Morning	Evening	Forecast	Adjusted <sup>7</sup>
Available Island System Supply: <sup>5</sup>	1,185 MW	Thursday, September 17, 2020	14	17	740	740
NLH Island Generation: <sup>4</sup>	850 MW	Friday, September 18, 2020	17	17	765	765
NLH Island Power Purchases: <sup>6</sup>	120 MW	Saturday, September 19, 2020	13	9	775	775
Other Island Generation:	215 MW	Sunday, September 20, 2020	8	7	810	810
ML/LIL Imports:	-	Monday, September 21, 2020	8	10	795	795
Current St. John's Temperature & Windchill:	11 °C	Tuesday, September 22, 2020	13	15	810	810
7-Day Island Peak Demand Forecast:	820 MW	Wednesday, September 23, 2020	12	14	820	820

**Supply Notes For September 17, 2020**

- 3
- Notes:
1. Generation outages for running and corrective maintenance are included. These are not unusual for power system operations. They generally do not impact customer supply. The power system operators schedule outages to system equipment whenever possible to coincide with periods when customer demands are low and sufficient supply reserves are available. However, from time to time equipment outages are necessary and reserves may be impacted.
  2. Due to the Island system having no synchronous connections to the larger North American grid, when there is a sudden loss of large generating units there may be a requirement for some customer's load to be interrupted for short periods to bring generation output equal to customer demand. This automatic action of power system protection, referred to as under frequency load shedding (UFLS), is necessary to ensure the integrity and reliability of system equipment. Under frequency events have typically occurred 5 to 8 times per year on the Island Interconnected System and the resultant customer load interruptions are generally less than 30 minutes. With the activation of the Maritime Link frequency controller during the winter of 2018, UFLS events have occurred less frequently.
  3. As of 0800 Hours.
  4. Gross output including station service at Holyrood (24.5 MW) and improved NLH hydraulic output due to water levels (35 MW).
  5. Gross output from all Island sources (including Note 4).
  6. NLH Island Power Purchases include: CBPP Co-Gen, Nalcor Exploits, Rattle Brook, Star Lake, Wind Generation and capacity assistance (when applicable).
  7. Adjusted for curtailable load, market activities and the impact of voltage reduction when applicable.

**Section 3  
Island Peak Demand Information  
Previous Day Actual Peak and Current Day Forecast Peak**

Wed, Sep 16, 2020	Actual Island Peak Demand <sup>8</sup>	08:10	767 MW
Thu, Sep 17, 2020	Forecast Island Peak Demand		740 MW

- Notes: 8. Island Demand / LIL / ML Exports (where applicable) is supplied by NLH generation and purchases, plus generation owned and operated by Newfoundland Power and Corner Brook Pulp & Paper (Deer Lake Power, DLP).